

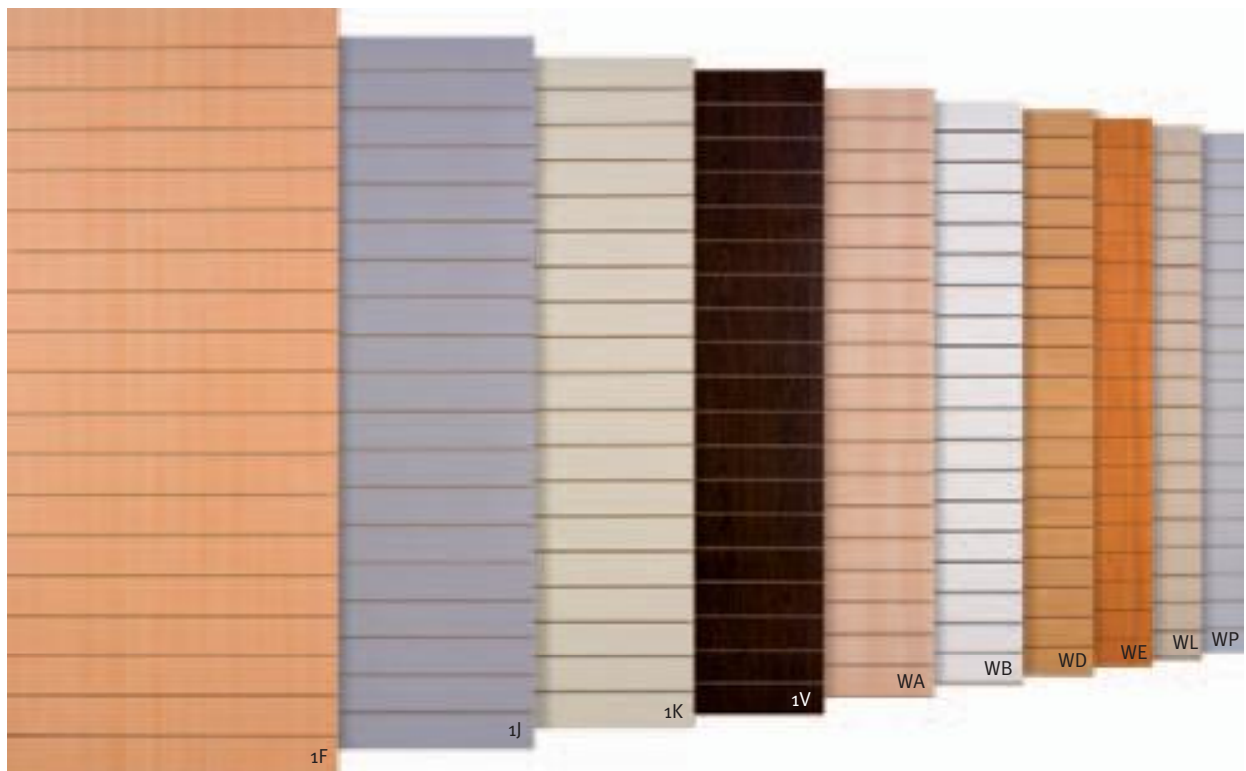
Qs

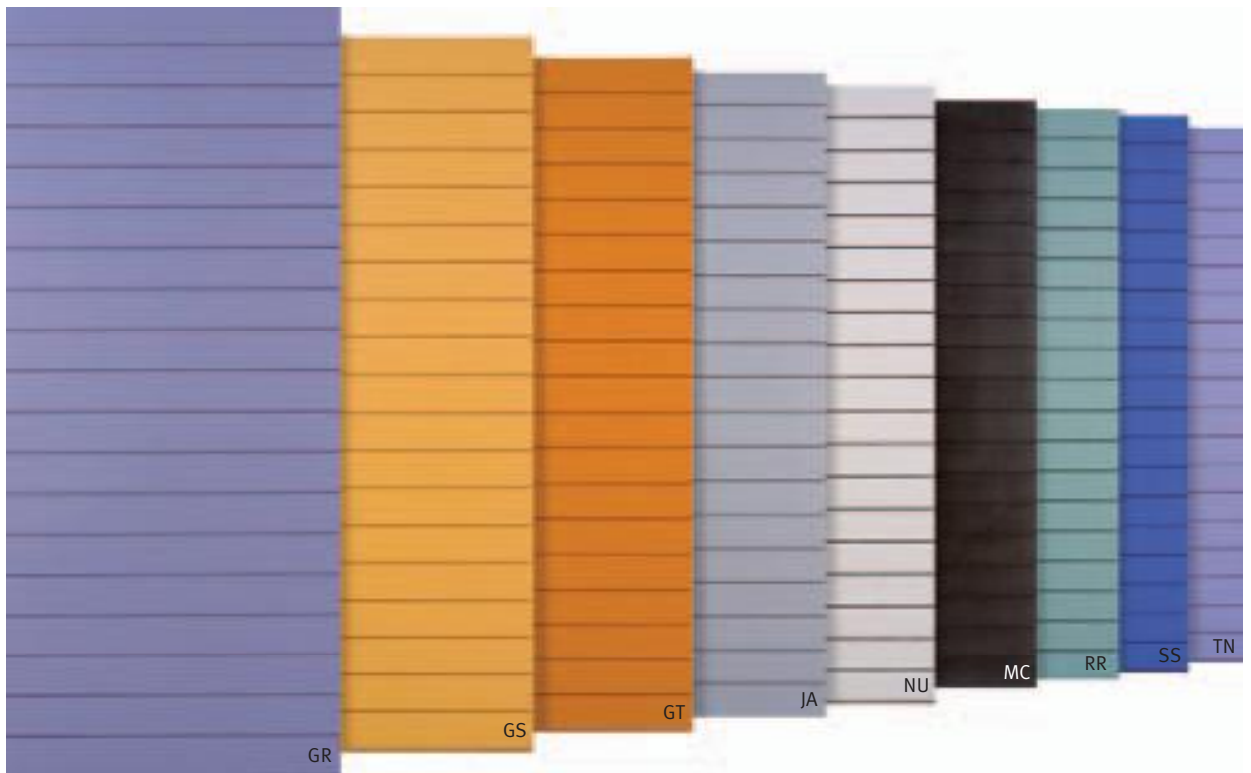
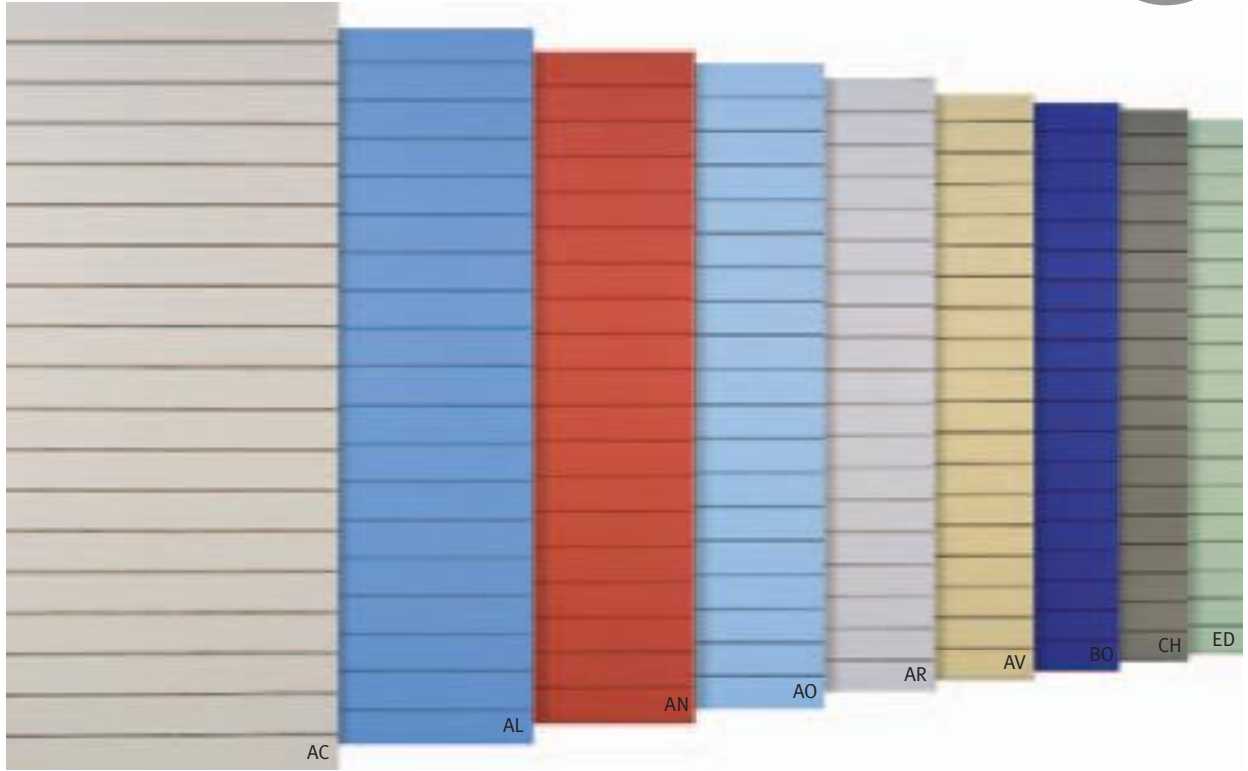


Il pannello Thinline nella versione QS (Queen Size), è proposto nel formato di mm 2287 x 1000 ed è disponibile nei 10 colori di melamminico.

The Thinline panel, in the QS version (Queen Size), is provided in the size 2287 x 1000 and it is available in 10 colours of the melamine chart.

melamminici Qs melamminici Qs

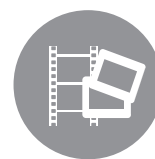




stampa digitale digital print



laminati laminates



È possibile effettuare una stampa digitale che riproduce immagini e comunicazioni pubblicitarie direttamente sul pannello. Grazie alle dimensioni ridotte delle fessature, il progetto grafico iniziale non viene minimamente alterato.

It is possible to provide a digital print of an image or an advertisement on the panel. Due to the small dimensions of the grooves, the original graphic project is not at all altered.



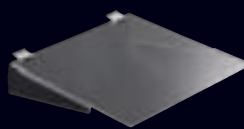
Viene offerta la possibilità di rivestire i pannelli Thinline, sia nella versione KS che QS, con i laminati contenuti nella mazzetta ABET Print divisi nelle tipologie tinte unite, serie legni e serie metalli.

It is offered the chance to coat the Thinline panels, either in KS or QS version, with the laminates included in the ABET Print colour chart, divided into three finishes: plain colour, wood and metal.

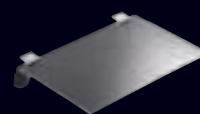
thinline accessori metacrilato methacrylate accessories



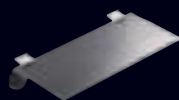
pianetto portacamicie
shirt-holder top



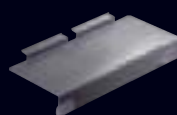
pianetto con rinforzi laterali
top with lateral reinforcement



pianetto semplice
top



pianetto semplice
top



pianetto con portaprezzo
top with price-holder



portacellulare
mobile phone-holder

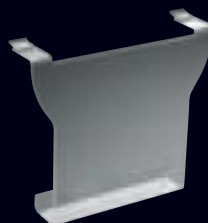
Questi accessori sono realizzati in metacrilato trasparente per non alterare l'effetto generale degli articoli esposti. La gamma comprende pianetti con portaprezzo per l'esposizione delle calzature, articoli per telefonia ed elettronica ed espositori per occhiali.

These accessories made of acrylic do not affect the general look of the items displayed.

They range from shoes holders with price holder to telephony and electronics items, to display stands for glasses.



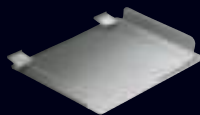
portascarpe girevole
rotating shoes-holder



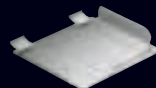
portariviste
magazine-holder



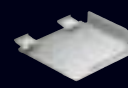
pianetto inclinato
inclined top



pianetto con alzate laterali
top with lateral raising



pianetto con alzate laterali
top with lateral raising



pianetto con alzate laterali
top with lateral raising

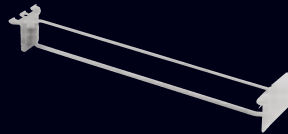
thinline accessori basic basic accessories

cromo lucido shiny chrome



La gamma di accessori Basic consente di soddisfare tutte le esigenze espositive, dai prodotti contenuti in blister ai capi d'abbigliamento.

The range of accessories Basic complies with all the requirements of an exhibition area, from the items contained in blisters to clothing.



gancio con portaprezzo
hook with price-holder



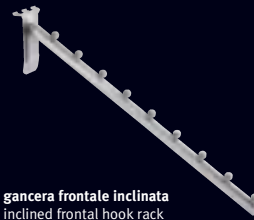
portaocchiali
glasses-holder



gancio con disco
hook with disk



gancera frontale diritta
frontal hook rack



gancera frontale inclinata
inclined frontal hook rack



gancio doppio con portaprezzo
duble hook with price-holder



gancio doppio
double hook



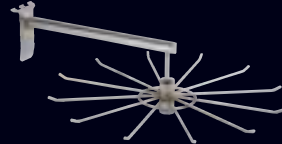
gancio semplice
simple hook



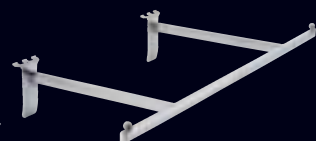
portacasco
helmet-holder



portapallone
ball-holder



espositore girevole
rotating exhibitor

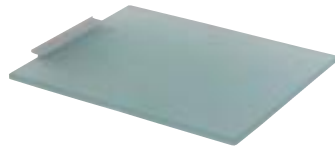
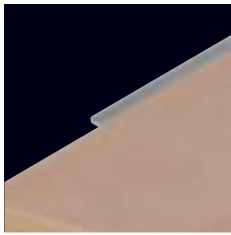
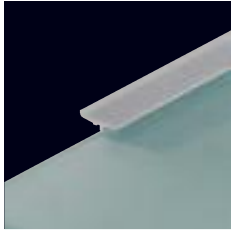


gancera longitudinale
longitudinal hook rack

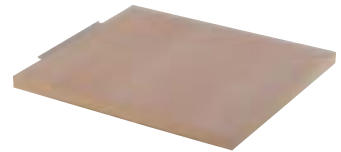


mensola con piano in vetro
bracket with glass top

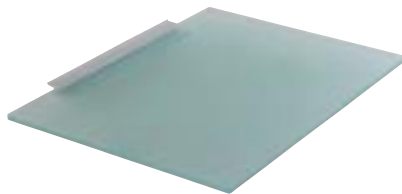
thinline ripiani tops



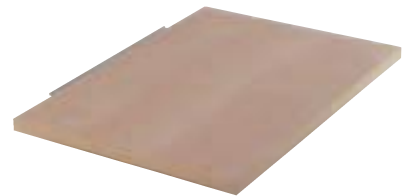
ripiano in vetro con profilo in alluminio
glass top with aluminium profile



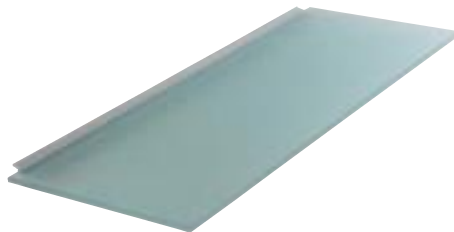
ripiano in legno con profilo in alluminio
wooden top with aluminium profile



ripiano in vetro con profilo in alluminio
glass top with aluminium profile



ripiano in legno con profilo in alluminio
wooden top with aluminium profile



ripiano in vetro con profilo in alluminio
glass top with aluminium profile



ripiano in legno con profilo in alluminio
wooden top with aluminium profile

I ripiani sono realizzati in melamminico con bordo ABS 18 mm e sono disponibili nelle 10 finiture per il melamminico incluse nella serie QS e nelle 18 tinte verniciate della cartella colori.

These tops in melamine have an ABS edge (thickness mm 18) and they are available in 10 finishes for melamine included in the QS series, besides the 18 varnishings of the colour chart.